

# JID INNOVATIONS Revision Checklist

To facilitate a favorable review of your revised submission, and to avoid unnecessary delays if your manuscript is accepted for publication, please ensure it includes the following.

Full details on all items below can be found in our [Information for Authors](#).

**Please note: *JID Innovations* uses Double Anonymized Peer Review (DAPR), in which authors' identities are not disclosed to reviewers -- and reviewers' identities are not disclosed to authors. This process is intended to provide a fairer review for submitting authors.**

## Author Information



- During initial submission you completed the “[Author Details Template](#)” which provided author information that was not shared with external peer reviewers. Please check that any additions you made during the revision process has not added any identifying information to the manuscript.
- [The corresponding author should link their ORCID](#) to their ScholarOne user account. <https://ORCID.org>.
- Only two corresponding authors may be listed.
- Any changes to authorship must include an [Author Change Letter](#).

## Study Information



- Data Availability Statement is required but should only be included in ‘[Author Details Template](#)’.
- If reporting on human subjects, each should have provided “written, informed consent”; if not, explain why in the text. If reporting on children, the parent or guardian should have provided the consent; be sure this is stated clearly.
- Include the name of the approving institution, or institution providing waiver, for all human and animal studies; if approvals were not required, explain why in the text. (Only include this information in the ‘[Author Details Template](#)’).
- We encourage use of the free [Ethics Generator Tool](#) provided by [IOP Publishing](#), that helps authors provide correctly worded ethics statements.

## Forms



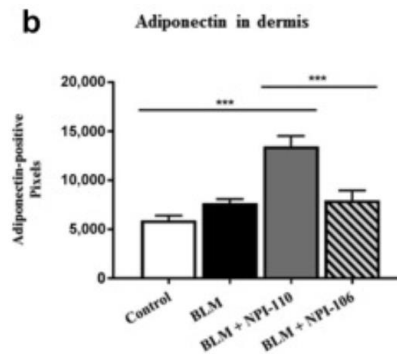
- An author form is **required** for publication. The corresponding author is responsible for completing this form on behalf of all authors. The form can be found in the corresponding author’s center at <https://mc.manuscriptcentral.com/jidi>.

## Figures

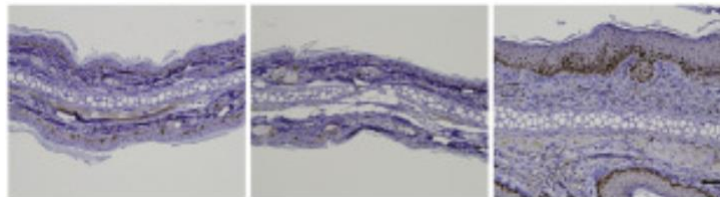


- An overall title for each figure that does not refer to individual panels;  
A legend describing the figure in full and defining all abbreviations and axis labels.  
**Figure 2. Amplification of autoreactive T cells in KA/KA skins.** (a) Flow cytometric analysis of T cells with TCR Vβ5.1+ antibody, gated at CD4, in the skin of WT and kinase-dead Ikka knockin (KA/KA) mice at 4 months of age (n = 3/group). (b) Data from (a), represented by mean ± SEM (three repeats)...

- Be prepared to supply 300 dpi image files if the manuscript is accepted for publication. Acceptable file formats include .eps, .tif, .jpg, .pdf, .pptx. For detailed guidance, see Elsevier's [artwork checklist](#).
- Figure panels labelled in lower case and presented in the white space above or beside each image (see examples below).
- For bar graphs, use three solid colors - white, gray, and black; a pattern (dots, checks, etc.) or color should be used on any additional bars.

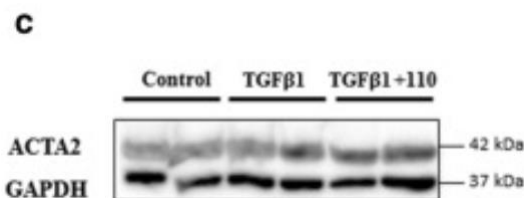


- For general guidance on properly presenting data in figures, see the article by [Rossner & Yamada](#). Figures will undergo the checks outlined in this article upon submission.
- Brightness and contrast adjustments to images should be made sparingly. No adjustments should be made to obscure or eliminate any information present in the original.
- Photomicrograph panels should be separated by white space or a solid black line; use a bar to indicate magnification.

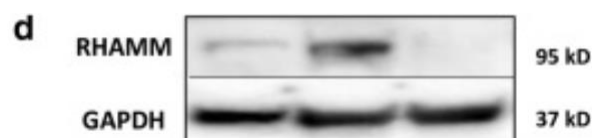


- Data from multiple gels may not be combined. Removing a complete lane from a gel and splicing the remaining lanes is allowable, but this should be clearly noted by the appearance of white space or a separating line. For detail see [Rossner and Yamada](#) (see especially the section "Splicing lanes together").

Example: single gel, no splicing



Example: single gel, proper splicing

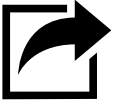




## Style & Files

- A single .pdf of the manuscript text and display items may be submitted. (Supplementary materials should be submitted separately.)
- Name files using the manuscript number and type of material, using this convention (i.e., INNOV-202X-XXXX-text.doc, etc.).
- Include BOTH a track AND clean version of the revised manuscript and submit as a .doc/.docx file (if not submitting a .pdf). Label the file as INNOV-XXXX-XXXX manuscript clean or INNOV-XXXX-XXXX manuscript tracked as appropriate.
- Include an anonymous point-by-point response to the reviewers & editors as a .doc/.docx file.
- Organize Original Articles as follows:  
Title Page, Abstract, Introduction, Results, Discussion, Materials and Methods, Data Availability Statement, Conflict of Interest Statement, Acknowledgments, CRediT Statement (author contributions), References, Tables, Figure Legends
- If your article was transferred from *JID* as a Letter to the Editor please change the article type to match *JID Innovations* article types listed here: <https://www.jidinnovations.org/content/authorinfo#article-types-2-3>. *JID Innovations* does not publish original research as a Letter to the Editor.
- Supplementary Figures and Tables. *JID Innovations* is an online-only journal with no page limitations. Include all content in the main article and not as supplementary materials. Exceptions to this would include very large Excel tables, video files and other materials that cannot easily be copy edited.
- If your article contains identifiable images of participants or patients please check our policy [guidelines here](#) and provide appropriate permissions.
- Avoid claims of novelty for your work (“new”, “novel”, or “the first”).
- Figures and tables should be cited in order in the text.
- Figure captions - Help the reviewers by entering the Figure #, title, and legend with each of your image files in the caption box provided in our submission system. For images saved as .pptx and .pdf files enter the Figure #, title, and legend within each of your image files (.pptx and .pdf), below the image. [See full instructions](#).
- Refer to supplementary material as Supplemental Movie S1, S2; Supplemental Table S1, S2, etc.
- Present references in JID style (Author, year); see [details](#).
- If reprinting figures from another publication, upload the permissions to do so as a “supporting document”. Include a permissions statement with a reference to the reprinted material in the figure legend (e.g., “Reprinted from Smith et al, 2002 with permission from Elsevier”).

- Please include only the latest set of files. If you have updated a file, remove the original version and upload the revised file.



---

### **Submit Your Revised Manuscript**

- Check that the .pdf displays your submitted files as expected. This is what most reviewers and editors will view.
- SUBMIT your manuscript at to our submission site: <http://mc.manuscriptcentral.com/jidi>.

*Updated October 17, 2024*