

JID Revision Checklist

To facilitate a favorable review of your revised submission, and to avoid unnecessary delays if your manuscript is accepted for publication, please ensure it includes the following.

Detail on all items below can be found in our [Information for Authors](#).



Author Information

- [ORCiDs](https://ORCID.org) for corresponding authors <https://ORCID.org>.
- [CRediT](#) Contribution Statement in the following format:
Conceptualization: AB, BC; Formal Analysis: BC, CD; Writing – original draft: AB, BC, CD.
- [Conflict of Interest Statement](#).
- Any changes to authorship must include an [Author Change Letter](#).



Study Information and consent

- Data Availability Statement is required.
 - If you have deposited large datasets, ensure these have been released according to JID's data sharing policies; deposition and approval takes time, so avoid unnecessary delays by starting early.
 - Check any URLs in your manuscript to ensure they resolve correctly.
- If reporting on human subjects, each should have provided “written, informed consent”; if not, explain why in the text. If reporting on children, the parent or guardian should have provided the consent; be sure this is stated clearly.
- Include the name of the approving institution for all human and animal studies; if approvals were waived by the institution's Institutional Review Board or Research Ethics Committee, explain why in the text.
- Need help? Try [this ethics statement generator](#).
- Patient consent is needed for any identifiable patient images, see our [guidance](#) on Publication of Identifiable Patient or Participant Images and/or Details



Forms

- [Conflict of Interest and Authorship Declaration form](#) is required for publication; the corresponding author will be asked to complete this on behalf of all authors; a link to this form will be emailed on submission, and can also be found in the corresponding author's author center at <https://mc.manuscriptcentral.com/jid>.
- A [License to Publish form](#) is required for publication; only the corresponding author should complete this form; this can be found in the corresponding author's author center at <https://mc.manuscriptcentral.com/jid>.



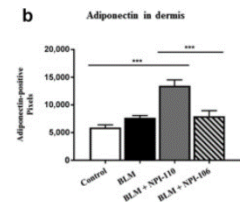


Figures

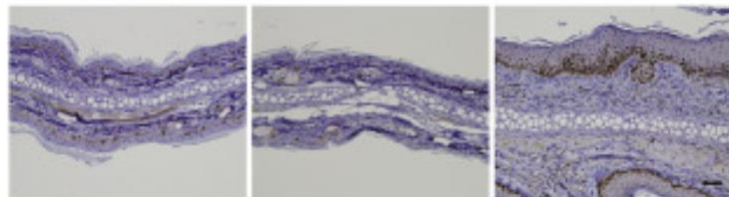
- An overall title for each figure that does not refer to individual panels.

Figure 2. Amplification of autoreactive T cells in KA/KA skins.

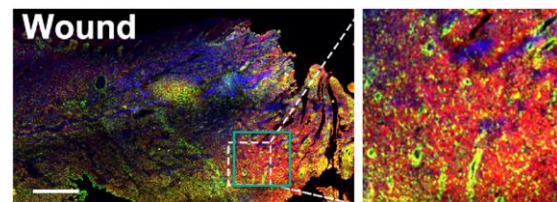
(a) Flow cytometric analysis of T cells with TCR V β 5.1+ antibody, gated at CD4, in the skin of WT and kinase-dead Ikk α knockin (KA/KA) mice at 4 months of age (n = 3/group). (b) Data from (a), represented by mean \pm SEM (three repeats)...



- Be prepared to supply 300 dpi image files if the manuscript is accepted for publication. Acceptable file formats include .eps, .tif, .jpg, .pdf, .pptx
- Figure panels labelled in lower case and presented in the white space above and to the left of each image (see examples below).
- For bar graphs, use three solid colors - white, gray, and black; a pattern (dots, checks, etc.) or color should be used on any additional bars.
- For general guidance on properly presenting data in figures, see the article by [Rossner & Yamada](#). Figures will undergo the checks outlined in this article upon submission.
- Brightness and contrast adjustments to images should be made sparingly. No adjustments should be made to obscure or eliminate any information present in the original.
- Photomicrograph panels should be separated by white space or a solid black line; use a bar to indicate magnification.

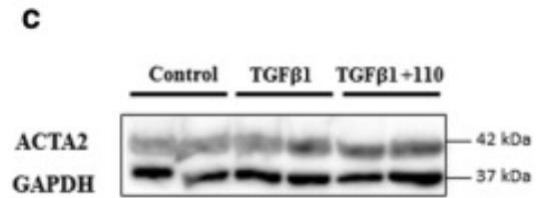


- Inset image boxes should be placed to match the magnified image. The below example is incorrect, the green box shows the correct placement.

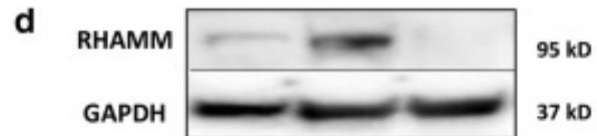


- Data from multiple gels may not be combined. Removing a complete lane from a gel and splicing the remaining lanes is allowable, but this should be clearly noted by the appearance of white space or a separating line. For detail see [Rossner and Yamada](#) (see especially the section "Splicing lanes together").

Example: single gel, no splicing



Example: single gel, proper splicing



Style & Files

- A single .pdf of the manuscript text and display items may be submitted. (Supplementary materials should be submitted separately.)
- Track revisions in your revised manuscript & submit as a .doc/.docx file (if not submitting a .pdf).
- Include a point-by-point response to the reviewers & editors as a .doc/.docx file.
- Organize Original Articles as follows:
Title Page, Abstract, Introduction, Results, Discussion, Materials and Methods, Data Availability Statement, Conflict of Interest Statement, Acknowledgments, CRediT Statement (author contributions), References, Tables, Figure Legends.
- Organize Letters to the Editor as follows:
Title Page, Letter Text, Data Availability Statement (if applicable), Conflict of Interest Statement, Acknowledgments, CRediT Statement (author contributions), References (maximum 10), Tables, Figure Legends. *Maximum 1000 words / 2 display items*
- See the [instructions to authors](#) for all article word limits.
- Avoid claims of novelty for your work (“new”, “novel”, or “the first”).
- Figures and tables should be cited in order in the text.
- Figure captions - Help the reviewers by entering the Figure #, title, and legend with each of your image files in the caption box provided in our submission system. For images saved as .pptx and .pdf files enter the Figure #, title, and legend within each of your image files (.pptx and .pdf), below the image. [See full instructions](#).

- Refer to supplementary material as Figure S1, S2; Table S1, S2, etc.
- Present references in JID style (Author, year); see [details](#).
- If reprinting figures from another publication, upload the permissions to do so as a “supporting document”. Include a permissions statement with a reference to the reprinted material in the figure legend (e.g., “Reprinted from Smith et al, 2002 with permission from Elsevier”).
- Provide supplementary material that should be typeset as editable files (this will be charged at \$40/e-page); provide material that should NOT be typeset (including but not limited to large tables, movie files, etc.) as a single .pdf or in native file format. These will be charged at \$125/first file; \$75/each additional file.
- Help the reviewers by entering the Figure #, title, and legend with each of your image files in the caption box. See full [instructions](#) on how to add this information. **For images saved as .pptx and .pdf files** enter the Figure #, title, and legend within each of your image files (.pptx and .pdf), below the image. See full [instructions](#).
- Name files using the manuscript number and type of material, using this convention (i.e., JID-2021-XXXX-text.doc, etc.).
- Please include only the latest set of files. If you have updated a file, please remove the original version and upload the revised file.



Submit Your Revised Manuscript

- Check that the .pdf displays your submitted files as expected. This is what most reviewers and editors will view.
- SUBMIT your manuscript at JID’s submission site: <http://mc.manuscriptcentral.com/jid>.